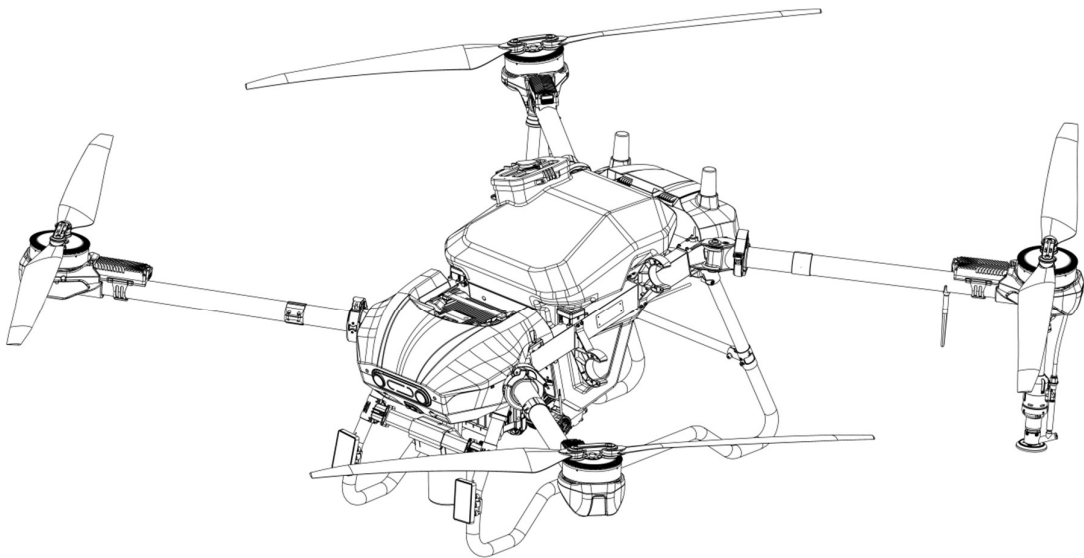


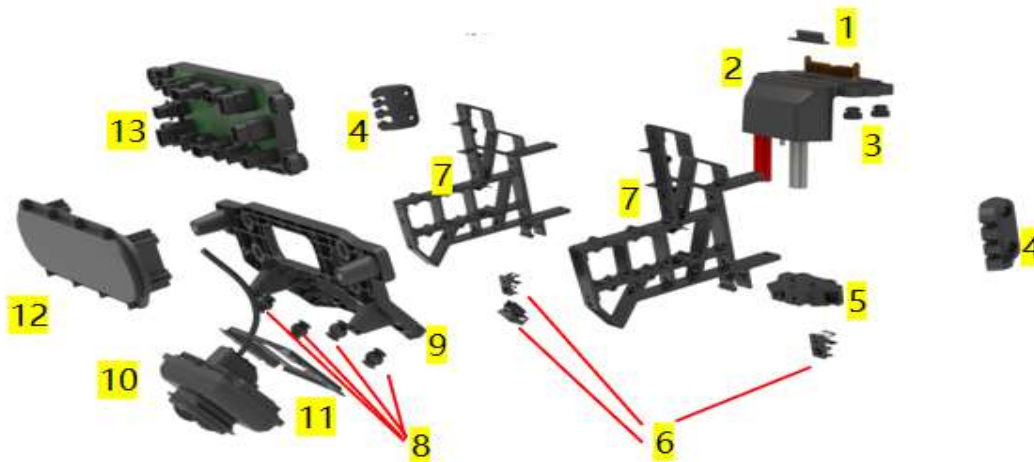
Agricultural Drone Instruction Manual

Front Bracket Module Assembly

Version 1



Front Bracket Module Assembly



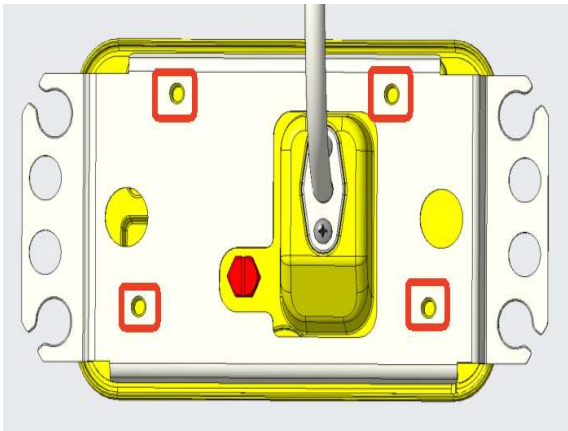
Exploded View of the Front Bracket Module

Bill of Materials for the Front Bracket Module

No.	Name	Number	Quantity per Unit
1	HD540 Battery Retaining Clip	201-000526	1
2	HD580 Power Distribution Board Assembly	203-000690	1
3	HD580 Power Distribution Board Support Gasket	201-001931	4
4	HD580 Nose Bracket Silicone Wire Clip	201-001829	2
5	HD580 Radar Spotlight Silicone Wire Clip	201-001824	1
6	HD580 Radar Spotlight Wire Clip	201-001827	3
7	HD580 Nose Main Bracket_New	201-002015	2

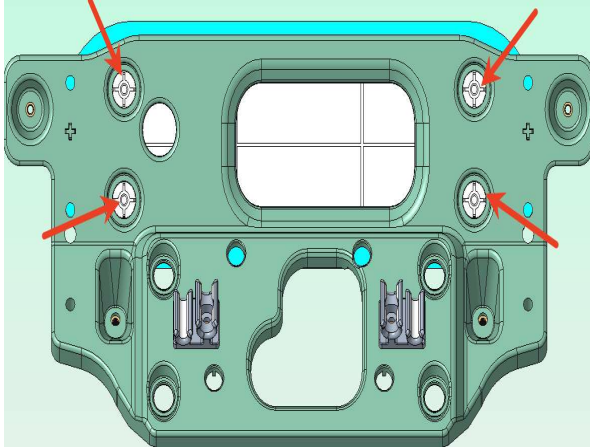
8	HD580 Monocular Shock Absorbing Ball	201-002073	4
9	HD580 Camera Main Bracket_New	201-002072	1
10	HS410 Fisheye Camera Assembly	758-000021	1
11	HD580 Monocular Adapter Bracket	126-000829	1
12	HD580 Binocular Decorative Assembly	758-000040	1

1. Connection Between the Fisheye Camera and the Monocular Adapter Bracket



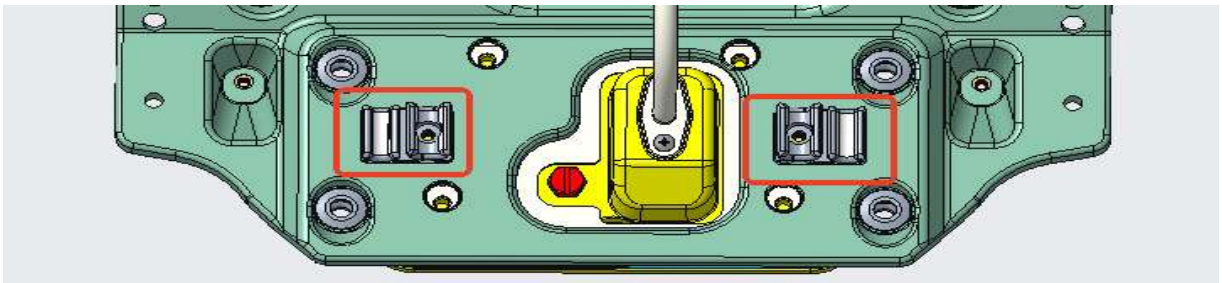
4 pcs M4*7.5 hex socket flat head screws
126-000830
Torque: 1.0±0.1NM

2. Connection Between the Binocular Decorative Assembly and the Camera Main Bracket



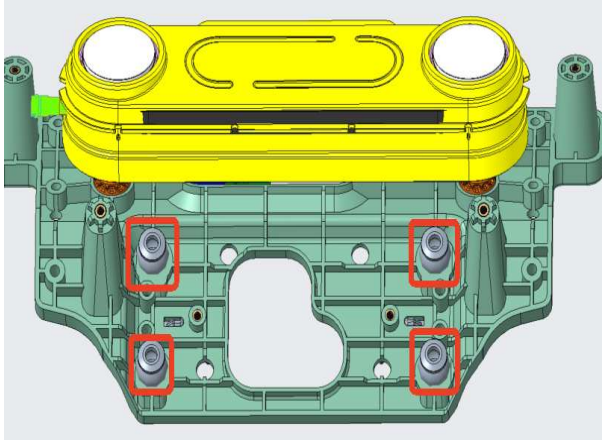
4 pcs ST3.0*10 hex socket flat head
self-tapping screws
4 pcs M3*16*1mm stainless steel washers
126-000494

3. Connection Between the Radar Spotlight Wire Clip and the Camera Main Bracket



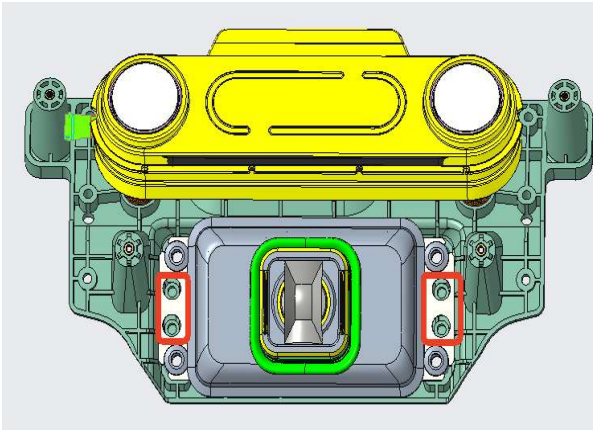
2 pcs M3*8 hex socket machine screws 126-000282
Torque: $0.8 \pm 0.08 \text{NM}$

4. Connection Between the Monocular Shock Absorbing Ball and the Camera Main Bracket



Insert the 4 shock absorbing balls into the camera main bracket.

5. Connection Between the Monocular Adapter Bracket and the Camera Main Bracket



Insert the 4 shock absorbing balls into the monocular adapter bracket.

4 pcs 4*10+M3*6 stainless steel press-in screws

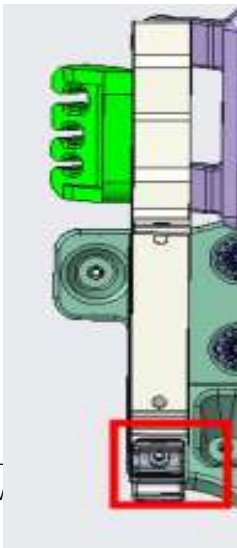
4 个 M5*10*1mm stainless steel washer

126-000831

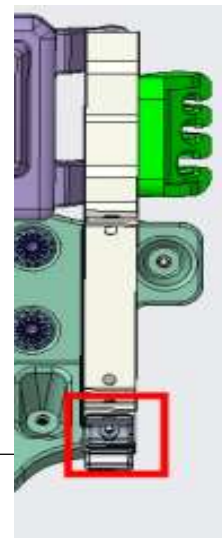
126-000832

Torque: 0.80 ± 0.08 NM

6. Connection Between the Monocular Adapter Bracket and the Camera Main Bracket



Install one radar spotlight wire clip on each of the two nose main brackets.

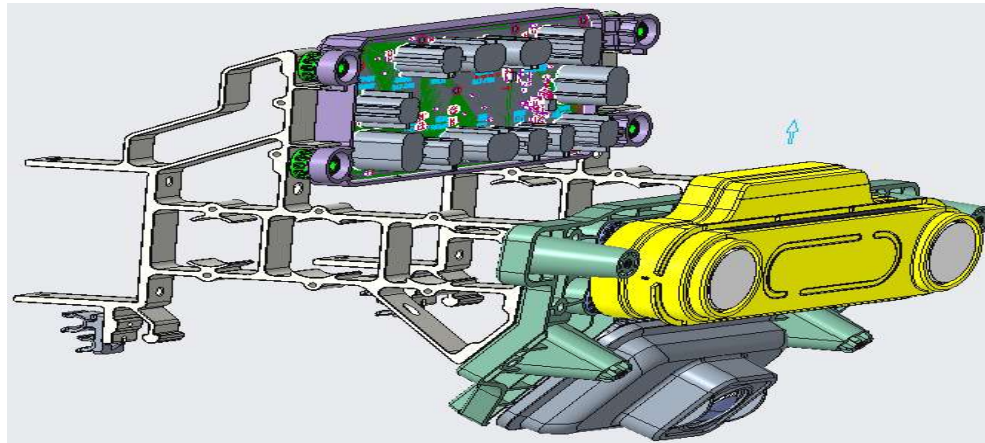


2 pcs M3* 8 hex socket machine screws

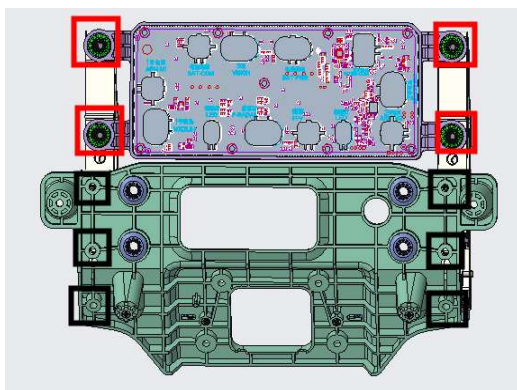
126-000282

Torque: $0.8 \pm 0.08 \text{NM}$

7. Connection Between the Binocular Decorative Assembly and the Camera Main Bracket



Side View



Forward Interface: 4 pcs 5*12+M4*8

Stainless Steel Shoulder Screws

4 pcs M6*12*1 Stainless Steel Washers

126-000756 126-000296

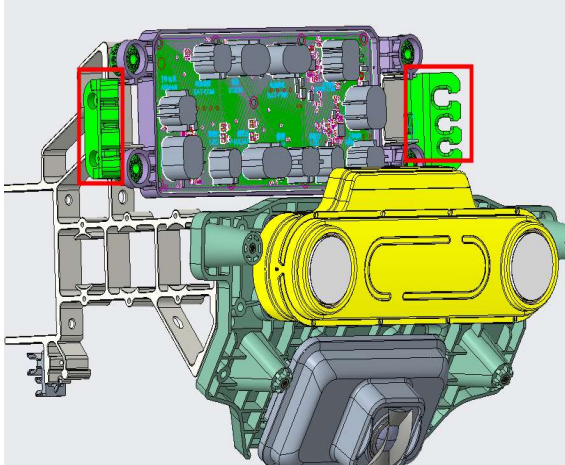
Torque: $1.0 \pm 0.1 \text{NM}$

Camera Bracket: 6 pcs M4*16 hex socket
machine screws

126-000289

torque: $1.0 \pm 0.1 \text{NM}$

8. Connection Between the Nose Bracket Silicone Wire Clip and the Nose Main Bracket



Use 2 pcs 5*5+M4*8 stainless steel clinch screws for each left and right nose bracket silicone wire clip
126-000754
Torque: 1.0 ± 0.1 NM